

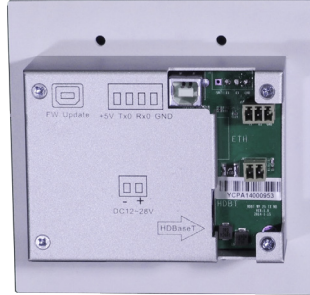
HDMI/VGA
 1-Way

AUDIO
 1-Way

RS-232
 1-Way

LBC-H/V-T-WP

Link Bridge™ HDBaseT HDMI/VGA Transmitter System



Product Description/Features (LBC-H/V-T-WP)

- Extend HDMI/VGA Signals up to 70 meters Over CAT-5e/6
- Ultra HD (4K2K) & HDTV Video Resolutions up to 720p/1080i/1080p@60 Hz
- Fully Uncompressed Video with embedded Audio Provides Zero Loss of Quality
- Selectable manual or auto-switching between VGA and HDMI inputs
- Video/Audio + Data over 1 Cable with True DDC/EDID/HDCP Transmission
- User Configurable Automated Display Monitor Power ON/OFF
- Compatible with our LBH & LBC Series Products
- Supports remoting power

LB-KP8-H/V

Link Bridge™ Keypad for LBC-H/V-T-WP
 8 Keys with RS-232 Interface



Product Description/Features (LB-KP8-H/V)

- Serve as a manual control keypad for LBC-H/V-T-WP
- 8-key keypad with RS-232 interface
- Powered externally (12VDC)
- User configurable buttons with dual color and backlit
- Replaceable button labels



DOING MORE WITH ONE CABLE



VIDEO SPECIFICATIONS

Resolution	4K2K or 1080p@60Hz
Connectors	HDMI Female Plug/ HD-15 VGA
Protocol	DDC/EDID/HDCP Capable

AUDIO*

Channel Capacity	1 L/R Analog
Operating Mode	Unbalanced (Stereo Audio)
Input Impedance	10k (Stereo Audio)
Connector	3.5mm Stereo Jack

*Audio embedded with VGA only

SERIAL DATA*

Channel Capacity	1
Signal Format	RS-232
Data Rate	Up to 57.6kbaud
Connector	Terminal Block

*Connector on rear panel

PHYSICAL

Dimensions

Wall-plate	4.56" (W) x 1.55" (D) x 4.50" (H)
Power Consumption	+24VDC @ 1.0 Amps (Max.)
Operating Temperature	0 to +55°C
Humidity	5 to 95% RH, Non-Condensing

TRANSMISSION

Cable Type	CAT-5e/6
Number of Cables	1
Connector	RJ-45

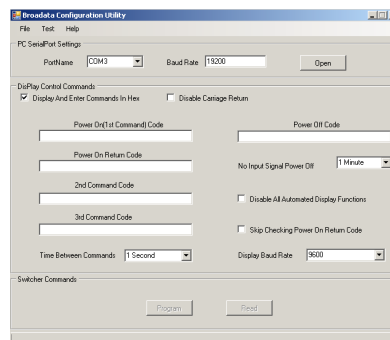
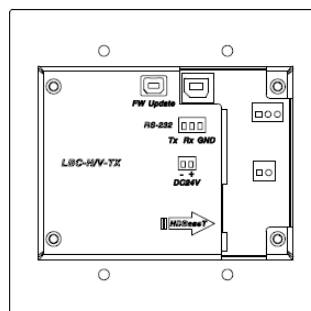
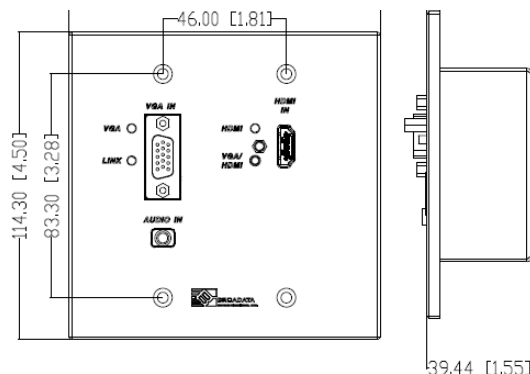
KEYPAD (LB-KP8-H/V)

Dimensions	1.78" (W) x 1.66" (D) x 2.85" (H)
Configuration Port	RS-232, baud rate 19200 baud, 8 data bits, 1 stop bit, no parity
Power	12 VDC (powered externally)

ORDERING INFORMATION

LBC-H/V-T-WP	Wall Plate HDBaseT Transmitter, CAT 5e/6, HDMI/VGA
LB-KP8-H/V	Link Bridge Keypad, 8 Keys, RS-232 Interface

PANEL DRAWINGS



DOING MORE WITH ONE CABLE